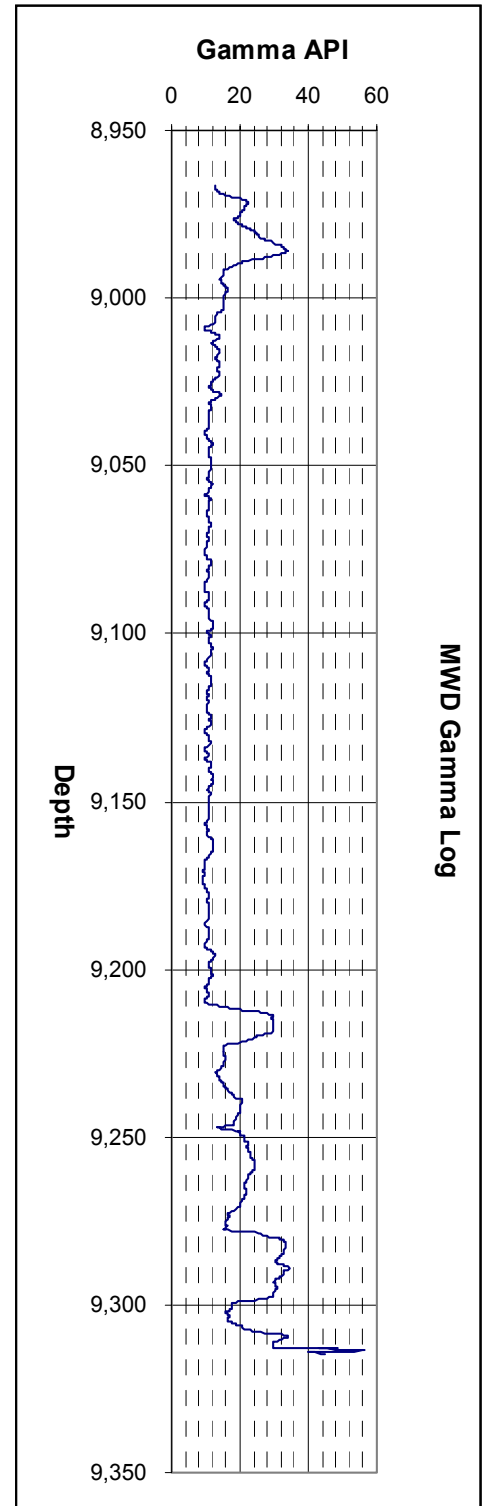
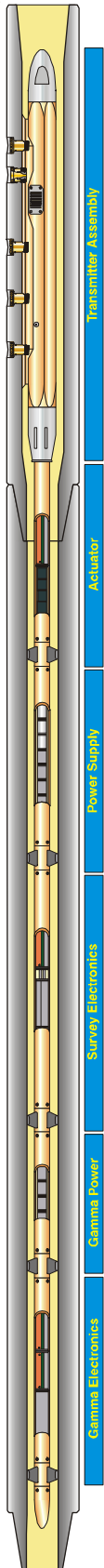


Product Sheet - MWD Gamma System

System Features

- Industry standard measurement using Sodium Iodide Crystal Scintillation Counter / Photo-Multiplier Combination provides high quality log comparable to wireline equivalent.
- Geolink secondary calibration facility in Aberdeen is referenced to the API Test Pit at the University of Houston. Log output can therefore be expressed in AAPI Units. Gamma Log format is according to API/IADC Specification. Gamma data is fully corrected for the effects of collar and borehole size.
- Real Time data is transmitted for correlation while drilling. Memory data recorded downhole for high resolution post-run log.
- The equipment is self contained and fully compatible with the Orienteer MWD system. It is easy to operate and simple to maintain in keeping with Geolink's design philosophy. The Gamma tool has its own battery power supply so that memory logging is independent of main tool function.
- Modular construction allows the sensor assembly to be exchanged between all sizes of drill colars from 2-7/8" to 9-1/2".
- Surface system includes fast continuous thermal plotter for paper or film log prints. Data can be exported directly from the surface system to a remote computer in real time using WITS format over a RS232 link or can be transferred in batch form as LAS or DBF files.



Measurement Specification		
Parameter	Range	Accuracy
Gamma Ray Equiv API Units	0-500 API	+/- 1.5% of Range
Vertical Resolution	6" / 152mm	